


BY

BRADINGTON-YOUNG



MAY 2022 SUPPLEMENT



In the spirit of American entrepreneurship,
Bradington-Young was founded over 40 years ago in the
small town of Cherryville, North Carolina, surrounded
by the foothills of the Great Smoky Mountains.



A group of enterprising young entrepreneurs led by Charles S. Young Jr. purchased a shuttered textile plant in 1978 and began a new business adventure with one simple philosophy: "Build high quality products for a fair price." A humble beginning, combined with a burning desire to be the very best, molded Bradington-Young into the premier leather furniture specialist it is today.

Now headquartered in Hickory, N.C., Bradington-Young employs over 200 quality craftsmen and women dedicated to our mission of contributing to the communities, nation and world in which we live. Our main plant and corporate offices comprise over 175,000 square feet in Hickory, while our cover plant remains in Cherryville.

Each style begins with a simple sketch. Our frames are then engineered using multi-ply, laminated hardwood components that are precision machined for an exact fit to provide a lifetime of structural integrity. Our stationary offerings feature genuine eight-way hand tied custom coil construction that is the industry benchmark for comfort and lasting quality. Motion styles utilize rigid bar spring units that simulate the eight-way hand tied process in conjunction with premium U.S. made mechanisms for a deeply luxurious ride and years of worry-free durability. Our extensive assortment of both motion and stationary products, all available in a wide variety of fabrics and leathers as well as finish and nail options, is sure to have something to please even the most discriminating furniture shopper. Comfort has found a home at Bradington-Young.



Luxurious Refinement. Exceptional Comfort.



bradington-young.com



Stationary Seating 4 • Luxury Accents 9

Recliners 10 • Home Office BY Design 12 • Index 13

Selecting the Right Leather 14 • Finish & Nail Options 16



Available in the
Married Cover Program

Stationary Seating





Meticulously hand-crafted by artisans with decades of upholstered furniture engineering experience, Bradington-Young is the ultimate choice for luxury stationary seating. Featuring genuine eight-way hand tied custom coil construction – the industry benchmark for comfort, lasting quality and a consistent ride across the entire seating surface – we take pride in creating the most comfortable, stylish and highest quality leather seating available. From sophisticated traditional styles to luxe modern with a variety of designs in between, make a statement in your home with the ultimate blend of luxury, style and comfort with Bradington-Young.

318-95 Christopher Stationary Sofa

74W x 38D x 36H

Leather shown: 980013-82

Finish: Stone

Nails: Pewter

318-25 Christopher Stationary Chair

29 1/2W x 38D x 36H

Leather shown: 980013-82

Finish: Stone

Nails: Pewter



318-95
Stationary Sofa
8-Way Hand Tie

74W x 38D x 36H
Seat Width: 66 1/2
Seat Depth: 21 1/2
Seat Height: 20 1/2
Arm Height: 24

MC



318-25
Stationary Chair
8-Way Hand Tie

29 1/2W x 38D x 36H
Seat Width: 22
Seat Depth: 21 1/2
Seat Height: 20 1/2
Arm Height: 24

MC



318-OT
Ottoman
27W x 20D x 18H

MC

Also Available:
318-75 Loveseat
318-25SW Swivel Chair
3318 Recliner



319-86
Stationary 2 Over 2 Sofa
8-Way Hand Tie

74W x 38D x 36H

Seat Width: 66 1/2

Seat Depth: 21 1/2

Seat Height: 20 1/2

Arm Height: 24

**Standard with nails, shown with no nails*



319-87
Stationary 2 Over Bench Sofa
8-Way Hand Tie

74W x 38D x 36H

Seat Width: 66 1/2

Seat Depth: 21 1/2

Seat Height: 20 1/2

Arm Height: 24

**Standard with nails, shown with no nails*

Also Available:
319-25 Stationary Chair
319-25SW Swivel Chair
319-OT Ottoman



478-95
Stationary Sofa
8-Way Hand Tie

93 1/2W x 42D x 40H
Seat Width: 83
Seat Depth: 24
Seat Height: 21
Arm Height: 24 1/2



478-25
Stationary Chair
8-Way Hand Tie

36W x 42D x 40H
Seat Width: 25
Seat Depth: 24
Seat Height: 21
Arm Height: 24 1/2



478-OT
Ottoman
31W x 23D x 18H

Also Available:
478-75 Loveseat
3478 Recliner, pg. 10

Luxury Accents

From enveloping shapes to relaxed designs Bradington-Young offers meticulously hand-crafted seating solutions that will surprise and delight your customers every time they sit down. With beautifully proportioned, comfortable designs for every space in the home they'll never want to get up! Our high-quality club chairs, decorative ottomans, swivel chairs and settees add blissful splendor to any seating ensemble.

Roen

NEW



411-25
Stationary Chair
8-Way Hand Tie
31W x 39D x 42 1/2H
Seat Width: 23
Seat Depth: 22
Seat Height: 21
Arm Height: 25

411-OT
Ottoman
24W x 18D x 18H

Roen

NEW



411-25SW
Swivel Chair
31W x 39D x 42 1/2H
Seat Width: 23
Seat Depth: 22
Seat Height: 21
Arm Height: 25
Also available: 411-OTSW Ottoman

Visit bradington-young.com for the full product line and additional information

Recliners

There is something irresistible about a plush recliner that often makes it the most desired seat in the house. After all, who doesn't enjoy the indulgence of lounging like a king or queen at the end of a long day? Emanating in luxury – and proving that comfort and sophisticated design can co-exist – our recliners guarantee long hours of relaxation without having to forgo style. With a wide variety of recliners available, it's easy to express your personal style while achieving your “royal-status.” Hand-crafted with the highest quality reclining mechanisms available today for a deeply luxurious ride, all you'll have to worry about is who gets control of the remote. Make it your own with a selection of more than 150 premium leathers, over 225 fabrics and an assortment of nail head and wood finish options.

Barker

NEW



3478 Recliner

31 1/2W x 42D x 44H
Seat Width: 23
Seat Depth: 22 1/2
Seat Height: 20 1/2
Arm Height: 25
Distance from Wall to Fully Recline: 17
Chair in Full Recline: 70 1/2
Matching stationary group, pg. 8

Sky

NEW



6450ZG Zero Gravity Recliner

32 1/2W x 37 1/2D x 41 1/2H
Seat Width: 24 1/2
Seat Depth: 21
Seat Height: 20 1/2
Arm Height: 24
Distance from Wall to Fully Recline: 6 1/2
Chair in Full Recline: 66

**6451ZG****Zero Gravity Recliner**

32W x 37 1/2D x 41 1/2H

Seat Width: 23

Seat Depth: 21

Seat Height: 20 1/2

Arm Height: 24

Distance from Wall to Fully Recline: 6 1/2

Chair in Full Recline: 66

**6452ZG****Zero Gravity Recliner**

31 1/2W x 37 1/2D x 41 1/2H

Seat Width: 23

Seat Depth: 21

Seat Height: 20 1/2

Arm Height: 24

Distance from Wall to Fully Recline: 6 1/2

Chair in Full Recline: 66

Home Office BY Design

Why settle for a cookie cutter, store-bought desk chair when you can choose from a line of fully customizable executive office chairs from Bradington-Young. Our Home Office BY Design program offers beautiful office chairs in six styles and over 400 customization options including any combination of leathers, novelty leathers, performance fabrics and chair base finishes to coordinate with their home décor. Domestically made with optimal functionality including raising and lowering, tilting back and swiveling, the bases are constructed with durable black resin, high quality casters. They are also offered in 10 wood finishes or 3 powder coated finishes (pewter, gunmetal and champagne) at an upcharge. Home Office BY Design chairs offer the same quality standards consumers are using in the rest of their living spaces and offer personalization and performance with unparalleled comfort that complements any home décor. When you're looking for a chair that makes a statement about who you are and what you do, in addition to providing comfort and support for your workday, Bradington-Young office chairs are the right choice.

Ebony

NEW



148-25EC

Home Office Chair

29 1/2W x 33D x 44 1/2 - 48 1/2H

Seat Width: 19 1/2

Seat Depth: 20

Seat Height: 20 - 24

Arm Height: 26 1/2 - 30 1/2

Shown with Casablanca finish and Antique Brass casters

Visit bradington-young.com for the full product line and additional information

INDEX

148-25EC Home Office Chair.....	12
318-25 Christopher Stationary Chair.....	5, 6
318-95 Christopher Stationary Sofa.....	5, 6
318-OT Christopher Ottoman.....	6
319-86 Christina Stationary Sofa.....	7
319-87 Christina Stationary Sofa.....	7
3478 Barker Recliner.....	10
411-25 Roen Stationary Chair.....	9
411-25SW Roen Swivel Chair.....	9
411-OT Roen Ottoman.....	9
478-25 Barker Stationary Chair.....	8
478-95 Barker Stationary Sofa.....	8
478-OT Barker Ottoman.....	8
6450ZG Sky Zero Gravity Recliner.....	10
6451ZG Cloud Zero Gravity Recliner.....	11
6452ZG Celestial Zero Gravity Recliner.....	11

Leather Types & Characteristics

At Bradington-Young, we understand your desire to make informed decisions about seating for your home that will suit your lifestyle. Here are some key definitions that will help you speak the language of leather and make the right choice.



NUBUCK

From formal and refined to rugged and casual, Nubuck leathers have the most varied and unique textures of all leather types. **Characterized by a tactile 'nap' that you can physically brush with your hand**, Nubuck leathers have a velvety, suede-style appearance that creates their distinguishing texture. Transparent dyes provide rich saturations of color which vary beautifully creating unique furniture treasures. Due to their unique texture, **Nubuck leathers are the most susceptible to body oils as they will stain and bind the nap**. Nubuck leathers will also fade and discolor in response to exposure to sunlight and temperature extremes.



ANILINE

Aniline leathers, the most luxurious of all leather types, offer rich colorations, natural markings and unique grain patterns. Because they are organic in nature, **they are more sensitive to sunlight and temperature extremes**. While it is tempting to put these stunning products front and center in your home, understand that these **natural leathers will evolve over time much like your favorite pair of leather shoes**.



ANILINE PLUS

Aniline-plus leathers are quite simply Aniline leathers **plus a slight protective coating**. This protective coating may include light pigmentation and/or a clear top coat. Offering similar feels to those of aniline leathers with the added benefit of a protective coating, these leathers are **more child and pet friendly than their Aniline counterparts**. They may, however, still fade or discolor when exposed to sunlight and temperature extremes.



FINISHED

Finished leathers are **practical for active households with children and pets**. Finished leathers are more **resistant to fading and discoloration when exposed to light, heat, moisture, dust and body oils**. These types of leathers also offer the most overall color consistency. Compared to other leather types, finished leathers **generally require much lower maintenance, as spills and stains should clean easily** unless they penetrate the surface coating of the leather.

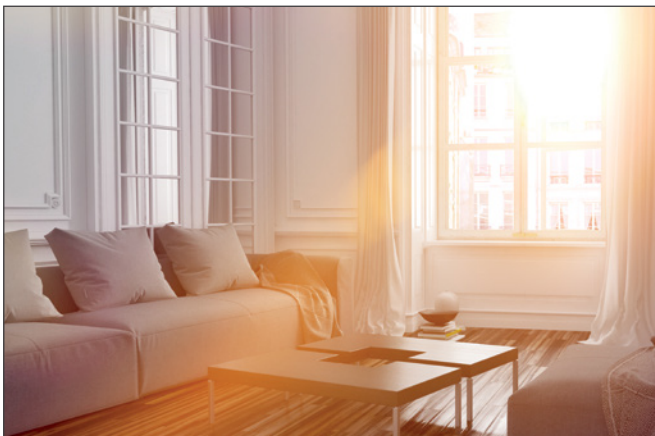
All leathers perform best when preventative maintenance is practiced.



Great for family rooms, kids & pets



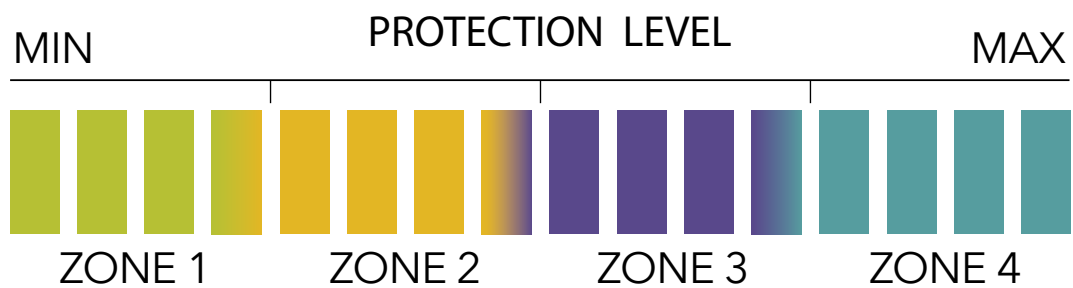
Susceptible to high & low temperatures



Susceptible to sunlight



Spills and stains clean easily



Create Your Own Style & Comfort With Classic To Contemporary Nail Head Options, Seat Cushion Choices & Hand-Crafted Wood Finishes

It's the details that make the difference.

Whether you're looking for a sofa, sectional, or reclining chair, you can express your style with many finish and nail head trim options from Bradington-Young.

Nail Head Trim



Antique



French
Natural



Gun Metal



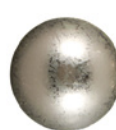
Natural



Nickel



Old Gold



Pewter

Seat Cushion Filling



HR FOAM

A high resilient (HR) polyurethane core cut to boxing size and wrapped in a layer of polyester fiber. The fiber-wrapped core is then topped with a channeled envelope generously filled with virgin polyester fibers encased in a down-proof muslin ticking providing a slow release of air for the occupant.



PREMIER DOWN

These cushions are constructed from a two-tier foam foundation. The bottom layer is firm for lasting support and the top layer is soft for sink-in comfort. The cushions are then wrapped in a down proof ticking filled with a generous blend of down, feathers and fibers. This cushion is designed to relax and "puddle" for a luxurious, lived-in look that complements our more casually styled offerings.



SPRING DOWN

Cushions consist of a 4 1/2" MARSHALL coil unit encased in premium foam. The cushion is then wrapped with a low-melt fiber on top and bottom. The Spring Down cushion is then surrounded by a down-proof ticking filled with a luxurious blend of down, feathers and fibers. This cushion is designed to provide superior comfort combined with great resiliency.

Finish Options



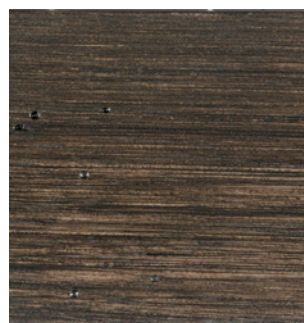
AMERICAN HONEY (AH)

Organic feel enriched by a warm, honey-toned coloration



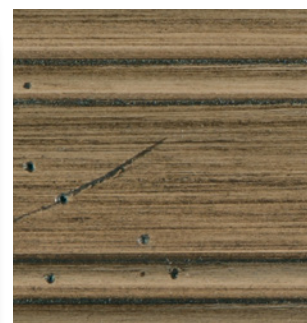
CASABLANCA (CB)

One coat of dark brown stain, accented by cowtailing and dry brush. Satin sheen. Nine finish steps.



COBBLESTONE (CO)

Deep rich taupe/brown in color accented by medium dry brushing and distressing. Medium sheen. Nine finish steps.



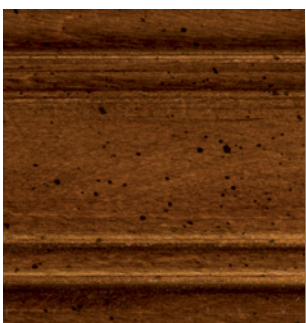
DOCKSIDE (DS)

Warm taupe tones accented with distressing. Two coats of sheen lacquer glazed and brushed.



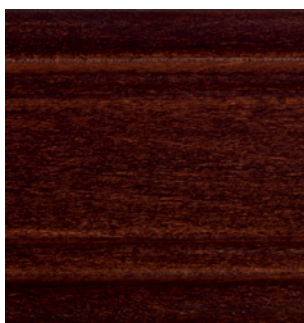
ESPRESSO (ES)

One coat of medium brown stain. Satin sheen. Six finish steps.



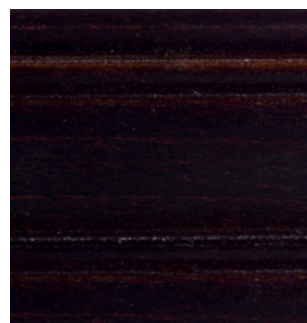
NEW CLASSIQUES (NC)

Medium brown in color with dark and light highlights and light flyspecks. Medium sheen. Nine finish steps.



MAHOGANY (MH)

One coat of dark brown stain. Satin sheen. Six finish steps.



PLANTATION (PL)

One coat of dark brown stain. Satin sheen. Six finish steps.



SATIN BLACK (SB)

One coat of black enamel. Satin sheen. Six finish steps.



STONE (ST)

Warm gray tones accented by dry hand brushing. Three finish steps.

BY

BRADINGTON-YOUNG



Our upscale leather upholstery line is manufactured engineered in Hickory, N.C. by Bradington-Young. Our designers travel the world to find artisans and craftsmen who uniquely possess the necessary skills to meet our high quality standards.

We strive to provide an accurate representation of our leather and finishes but due to changes in lighting and printing limitations, some color variation is possible. To determine the exact color of a leather, we suggest you visit a Bradington Young Retailer to see the actual product.

bradington-young.com